

PRESS RELEASE

TOKUJIN YOSHIOKA_Crystallize

Exhibition Overview

Born in 1967, Tokujin YOSHIOKA is one of the most influential artists in the world, highly acclaimed for his unrestrained concepts and experimental creativity in a wide range of fields, including art, design, and architecture, which have won him high acclaim both at home and abroad. It explores the extraordinary fascination of his oeuvre.

As new works of this exhibition, he will present the crystallized painting drawn by the vibration of music, “Swan Lake”, a sculpture of a crystallized flower, “Rose”, a chair constructed of seven strings, “Spider’s thread” and “Rainbow Church” built of crystal prisms and other pieces that have never been exhibited including his major works. This exhibition will be a vital opportunity to consider the relationship between nature and human-beings, and to share the scene that he “crystallizes (= gives a form to)” it as his creation for the next generation.

Exhibition Highlights

■ Yoshioka’s first large-scale solo exhibition at a public museum

This exhibition is the first large-scale solo exhibition of Yoshioka’s works at a public museum.

■ Crystallized Project

Yoshioka began his “Crystallized Project” in 2007. Works shown to date include his VENUS-Natural crystal chair, crystallized paintings, and a sculpture of a crystallized flower “Rose”. The crystallized paintings are drawn by growing crystals. In the process, music will be played and it gives the sound vibration to crystals to prompt its growth. It is as if a piece of music turns into one painting. This group of works combines visual impact with beauty built by his own theory of form and that have attracted attention worldwide for their mysterious quality and powerful presence. Drawing on the “accidental beauty” nature creates, these works are experiments with a deeply human emotional appeal. Yoshioka believes that by drawing our attention to the latent power and beauty of nature, this project asks important questions about the future.

■ Rainbow Church

In 2010, Seoul, Korea, was the site of Tokujin Yoshioka—SPECTRUM. As part of Rainbow Church, an architectural project he had been planning since his twenties, he showed a nine-meter-tall stained glass window built of 500 crystal prisms and symbolizing a church. It was inspired when the young Yoshioka visited the Chappelle du Rosaire, a chapel designed by Henri Matisse in his last years, and was struck by the beauty of its light. The sunlight of the Provence pouring in through the beautiful stained glass, created in the vivid colors so characteristic of Matisse’s paintings, created a space suffused with Matisse’s colors. There Yoshioka was seized by an ambition to construct a space of his own in which to experience light through all the senses. This large-scale installation presents that light, which has always been one of his ultimate goals.

■ Related Projects and Publications

In addition to satellite displays in the foyer and wall gallery, the museum programs will include a variety of show-and-talk sessions while the exhibition is underway. An official book including Yoshioka’s recent activities will also be published.

Artist Profile

Tokujin Yoshioka

<http://www.tokujin.com/>

Born in Saga, Japan in 1967. Worked under Shiro Kuramata in 1987 and Issey Miyake since 1988 and established his own studio, TOKUJIN YOSHIOKA INC. in 2000. He has done many projects with Issey Miyake for nearly 20 years such as space design and installation for ISSEY MIYAKE. Also, he has collaborated with various companies in and outside Japan such as CARTIER, HERMÈS, LEXUS, TOYOTA, SWAROVSKI, and other noted ones. Since the paper chair "Honey-pop"(2001) has attracted a great deal of public attention, Tokujin produced Driade's "Tokyo-pop", Yamagiwa's lighting "TōFU", cell phone "MEDIA SKIN" for au design project, chandelier "STARDUST", stool "Eternal" and "Stellar" for SWAROVSKI Crystal Palace, the chair made by baking fiber structure "PANE Chair - Baking A Bread Chair". "Water Block", a representative work of optical glass projects started since 2002, is permanently exhibited in Musee d'Orsay, Paris. Some of his most important works are exhibited as a part of permanent collections in the world's well-known museums such as Museum of Modern Art(MoMA) in New York, Centre National d' Art et de Culture Georges Pompidou, Victoria and Albert Museum, Cooper Hewitt National Design Museum and Vitra Design Museum.

Awards

Mainichi design Award, 2001

Cultural Affairs Section of Government of Japan, Encourage Prize, 2006

BVLGARI Brilliant Dreams Award, 2007

Good Design Award, 2007

Design Miami, Designer of the Year, 2007

Wallpaper Design Awards, 2008

Design for Asia Award(DFA Award), 2008

Elle Deco International Design Awards(EDIDA), Designer of the Year, 2009

TOKYO Design & Art ENVIRONMENTAL AWARDS, Artist of the Year, 2010

A&W Architektur & Wohnen, Designer of the Year, 2011

Publication

"TOKUJIN DESIGN" (Gap Publication), 2001

"Tokujin Yoshioka Design" (Phaidon Press), 2006

"Invisible Forms" (Access Publishing), 2009

"TOKUJIN YOSHIOKA" (Rizzoli International Publications), 2010

Exhibition Information

Period: October 3 [Thu], 2013 - January 19 [Sun], 2014

Closed on: Mondays (except for April 29, May 6), April 30, May 7

Opening Hours: 10:00 – 18:00 (*Last admission to the gallery floor is at 17:30)

Venue: Museum of Contemporary Art Tokyo

Organized by: Tokyo Metropolitan Foundation for History and Culture, Museum of Contemporary Art Tokyo / Nikkei Inc.

In collaboration with TOKUJIN YOSHIOKA INC.

Supported by Hitachi Systems, Ltd. / MIYAKE DESIGN STUDIO /ISSEY MIYAKE INC. / Santen Pharmaceutical Co., Ltd. /TOYO KITCHEN & LIVING Co., Ltd. / SEIKO NEXTAGE CO., LTD. /

Yamagiwa Corporation / etc.

In cooperation of MAXRAY INC. / Yamaha Corporation /Yamaha Music Japan Co., Ltd / ASAHI GLASS CO., LTD. / Spiber Inc. / TOLI Corporation / Nippon Electric Glass Co., Ltd. /amana salto inc. / NIPPURA Co., Ltd. / Seibu & Sogo /NEC Display Solutions, Ltd. / Pi Photonics, Inc. /S.C.ALLIANCE Inc. Media Entertainment Co. / Mitsubishi Kakoki Kaisha, Ltd. /KDDI CORPORATION / ASAHI-SHUZO SAKE BREWING CO.,LTD. etc.

PRESS IMAGES

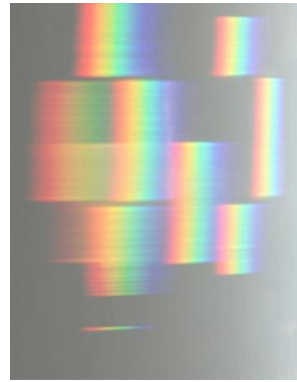
10 images are available for the publicity purpose. Please fill in the image request form and send it back to us via E-mail or FAX.



①



②



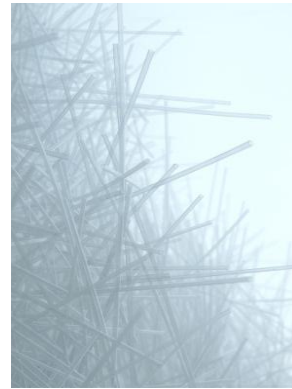
③



④



⑤



⑥



⑦



⑧Photo: © Nacása & Partners Inc.



⑨



⑩

Press Inquiry

Museum of Contemporary Art Tokyo, Public Relations Section

Kumiko Ohara

E-mail | k-ohara@mot-art.jp

TEL | +81 03-5245-1134

FAX | +81 03-5245-1141

Strictly for the PR purpose, we have 10 press images for this exhibition. These images can be obtained upon request using this image request form. Please FAX us at 03-5245-1141 or E-mail us.

Regards to the usage of these images, please be aware of the following;

- 1) All provided caption needs to be credited upon usage of the imagery. (Title, Name of the Artist/s, Year, Name of the photographer/s)
- 2) Trimming and editing images are prohibited.

*Much appreciated if you could send us a rough draft of the article before the final print.

**Please send us a copy of the magazine/newspaper/DVD/video/website link etc.

Name of the Magazine / Newspaper / TV program / Website:

Please circle your genre:

TV / Radio / Magazine / Newspaper /
Free-paper / Website / Mobile site / Others

On-sale date/ Airdate *If not fixed, planned

.....

Name of the Company:

Your Name:

E-mail Address@.....

Mailing Address:

Phone number:

FAX:

Please tick the box of the image/s your request:

Please note that all images provided are reference images and there is a regulation upon using the images for this exhibition.

If you are only using 1 image, please select either image number 1 or image number 2.

If you are using more than one image, please use image number 1 or image number 2 for your first choice.

The selection from the 2nd choice onwards can be selected from image number 3-10

①

②

③

④

⑤

⑥

⑦

⑧ Photo: © Nacása & Partners Inc.

⑨

⑩