

MOT アニュアル 2011

Nearest Faraway | 世界の深さのはかり方

MOT Annual 2011 Nearest Faraway

2011年2月26日(土) - 5月8日(日)

February 26 Saturday - May 8 Sunday 2011

池内 晶子 | Akiko IKEUCHI

椛田ちひろ | Chihiro KABATA

木藤 純子 | Junko KIDO

関根 直子 | Naoko SEKINE

富井 大裕 | Motohiro TOMII

八木 良太 | Lyota YAGI



Lyota Yagi *Sound sphere* 2010 Mixed media

MOT Annual 2011 Nearest Faraway

Exhibition Outline

Each year since 1999, Museum of Contemporary Art Tokyo has held a MOT Annual exhibition to showcase new trends in art, with a focus on the Tokyo metropolis. This time, the 11th MOT Annual will look at artists who are searching after the basis and the nature of our life; to see, to hear, to know, to be, by simple methods, and materials. The explorations of their immediate world may appear modest and closed, yet they in fact possess great flexibility, depth, and breadth of vision. Taking “Nearest Faraway” as its keyword, the exhibition will inquire into the potential of art that make the invisible to the visible and the meaning of creating art in our times.

Artists (in alphabetical order):

Akiko IKEUCHI, Chihiro KABATA, Junko KIDO, Naoko SEKINE, Motohiro TOMII, Lyota YAGI

Title: MOT Annual 2011 Nearest Faraway
Period: February 26th (Saturday) - May 8 (Sunday) 2011
Closed: Mondays (*except March 21st), March 22nd
Opening Hours: 10.00 – 18.00 (Ticket available until 17.30)
Venue: Museum of Contemporary Art Tokyo, Exhibition Gallery 3F
Organized by: Tokyo Metropolitan Foundation for History and Culture, Museum of Contemporary Art Tokyo
Supported by: COEDOBREWERY, EGUCHI KOHAN Co.,Ltd., HIROYUKI TANAKA ARCHITECTS, KASHIMA co. ltd., Masuki Co.,LTD., MITSUBISHI PENCIL CO.,LTD., NIPPON TOKUSHU FABRIC CO.,LTD.

Admission: Adult ¥1,000(800) / University & College Student, Over 65yrs old ¥800(640) / High School & Junior High School Student ¥500(400) / Free for Elementary School & Under
*() Price for a group, over 20 people

*Free entry to MOT permanent collection for ticket holders

*Discount available for audience purchasing ‘Kyoji Takubo’ exhibition

Enquiry: 03-5245-4111 (General Information) / 03-5405-8686 (Hello Dial)

Website: www.mot-art-museum.jp

Curator: Yoshimi Chinzei

Catalogue: To be published in March 2011. Design by Daishiro Mori

Also Showing: Kyoji Takubo / MOT collection

Related Program: -Event-

Motohiro Tomii x Keisuke Kondo ‘Workshop on Sculpture and Painting’

March 12th Saturday 14.00 –

@ Museum of Contemporary Art Tokyo Auditorium, 30 people (requires pre-registration), Free

Lyota Yagi x Shuta Hasunuma ‘Sound Performance’

April 2nd Saturday 15.00 –

@ Museum of Contemporary Art Tokyo, 100 people (in order of arrival), Free

*In addition talks by participating artists are planned during the exhibition period.

The above plans are subject to change. For more information please find Museum of Contemporary Art Tokyo website.

For press enquiry: Museum of Contemporary Art Tokyo Public Relations Section

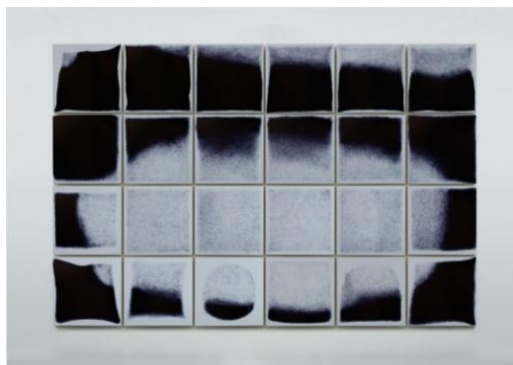
Mutsu Yoshikawa m-yoshikawa@mot-art.jp

Kumiko Ohara k-ohara@mot-art.jp

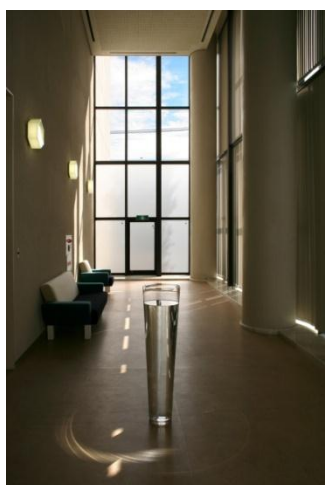
MOTAnnual 2011 Nearest Faraway Artists



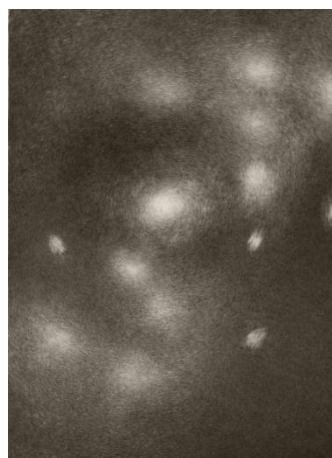
Akiko Ikeuchi *Knotted Thread-Red* 2009 Silk thread
Photo: Mai Hashimoto [Reference image]



Chihiro Kabata *Reply to Schwarzschild - 24 Metrics* 2009
Oil-based ballpoint pen / Inkjet paper [Reference image]



Junko Kido *Soraminoma* 2010
Cutting sheet, glass, water, paper & other
Courtesy of The Museum of Contemporary Art, Toyama
[Reference image]



Naoko Sekine *Arranged Points* 2007
Pencil / Watercolor paper (Sirius)



Motohiro Tomii *ball sheet ball* 2006
Aluminum plate, Super Ball
Photo: Masaru Yanagiba



Lyota Yagi *Sound sphere* 2010 Mixed media